

Turn it On

iCart

1. Plug power cord into wall

2. Plug Ethernet cord into wall drop
(or Ethernet hub if you have one)

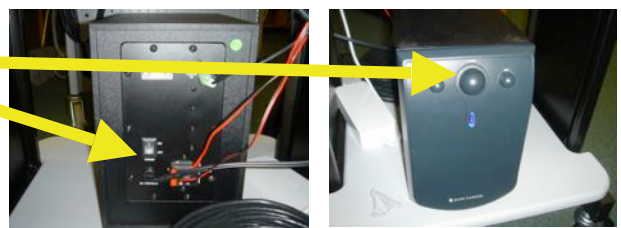
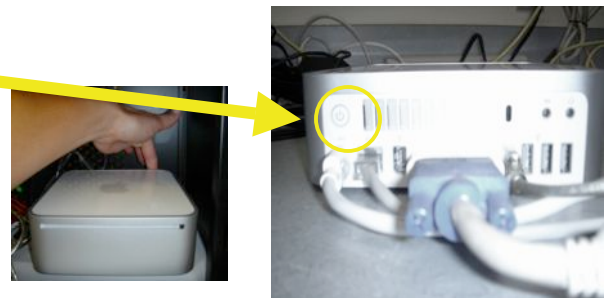
3. Make sure that lens cover is **off** of the
projector

4. Push the power button on the projector
(light should flash then turn green)

5. Push power button on the back of the
Mac Mini
(you should hear a sound when
computer turns on)

6. For sound make sure speaker is turned
on and volume is adjusted

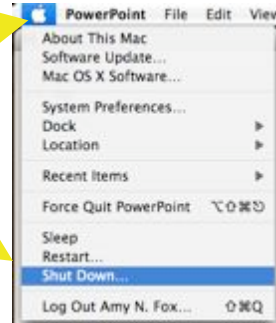
7. Login like usual



iCart

Turn it Off

1. Shut down computer



2. Push power button on projector twice



3. WAIT FOR FAN TO STOP!!!!
Do not replace lens cap while bulb is hot
or warm!!!

4. Unplug Power cord and Ethernet cord



Adjust the Viewing Area

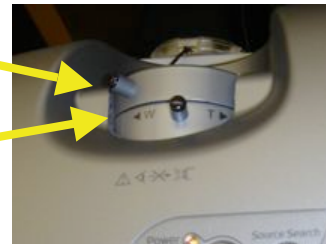
iCart

1. Raise the “foot” to fit your screen.



2. Focus with the outside lens ring

3. Zoom with the inside lens ring

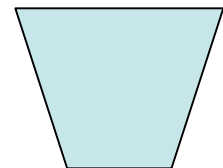


**Viewing Area
Wider at the Top or Bottom**

To fix this you will need to **keystone**.

Unfortunately each projector is a little different.

1. Look for a keystone button on the top of the projector.
2. Typically you will use the arrow keys to adjust.



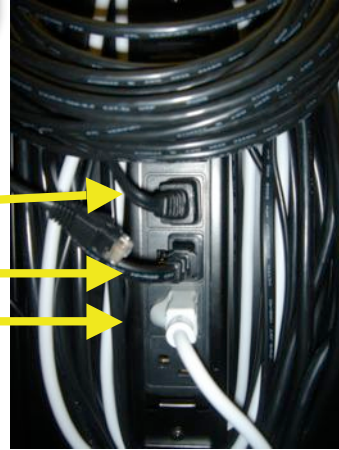
Keystone Symbol

Troubleshooting-Power

iCart

There should be at least three plugs in the power strip

- projector
- speaker
- mac mini



Remember Power Cords have two ends. Make sure both ends are attached.

Power Cord going into projector



Power cord going into mac mini



Don't forget power switches

This one on the side of the cart



This one on the back of the speaker

