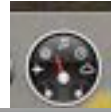
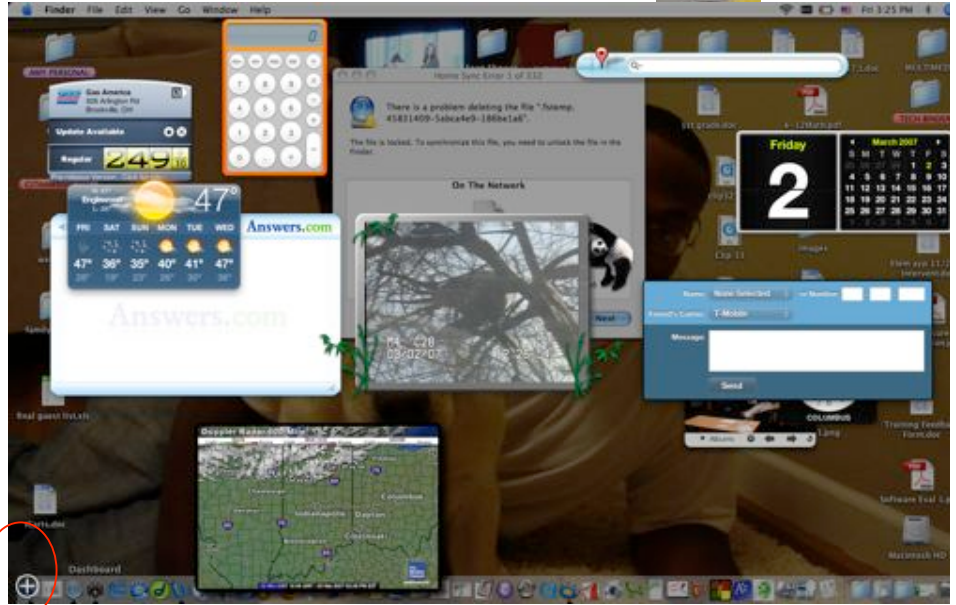


## Working with Widgets

This is the icon for Dashboard. Where Widgets are located. →



To add to the widgets you have showing on your dashboard click on this symbol in the lower left hand corner.



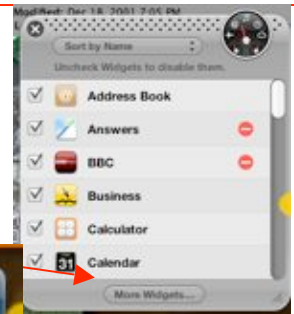
These additional widgets options will appear. →

To add one that you see to your dashboard simply click on it.



To find more widget options on the internet click on manage widgets.

Then click on more widgets.



To change information on a widget hover in the lower right-hand corner and an i will appear. Click on it.



To delete a widget off of the desktop, click on the x in the upper left-hand corner.